

# WINSTAR Display

## OLED SPECIFICATION

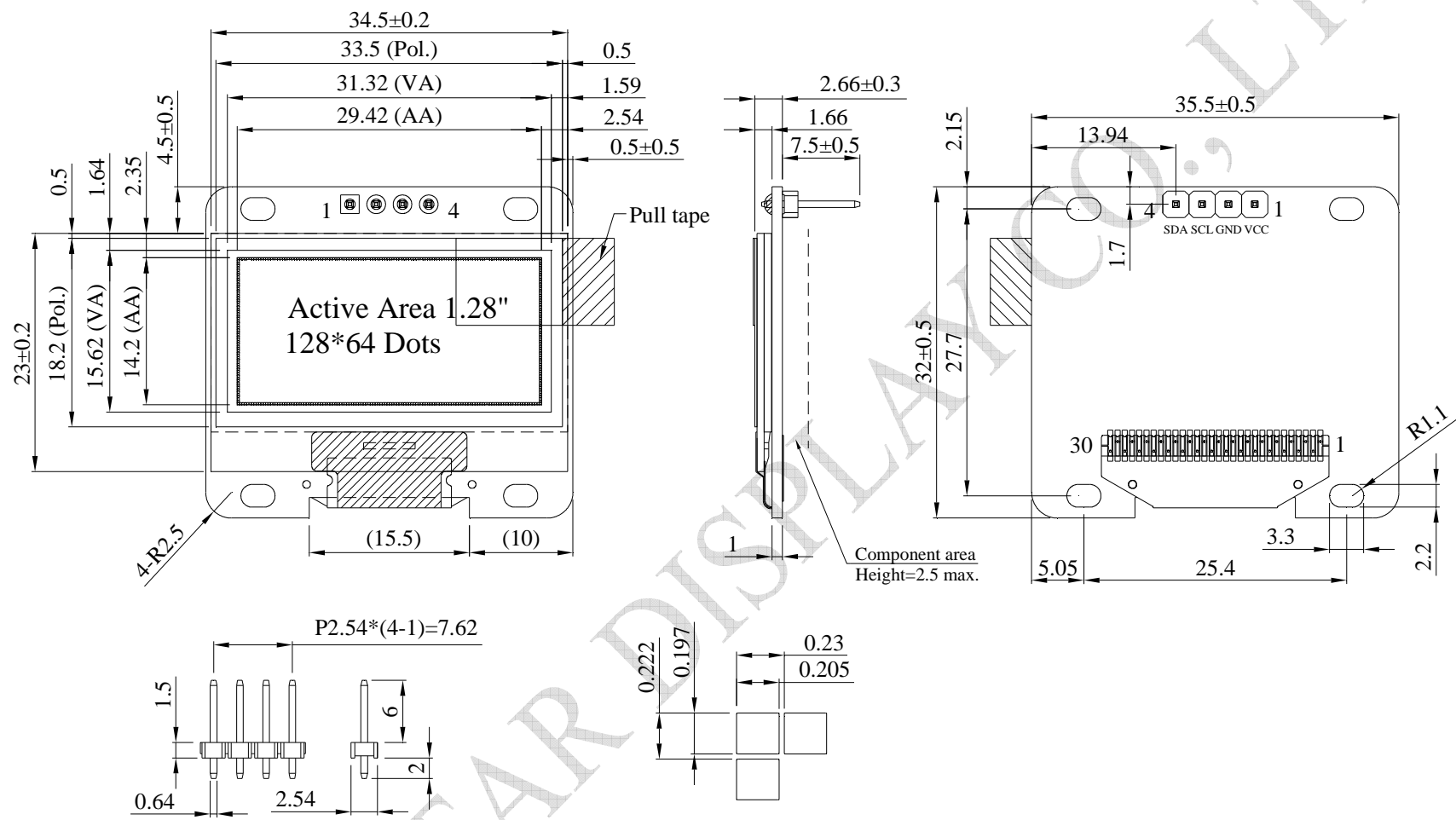
Model No:

**WEA012864L**

## General Specification

Item	Dimension	Unit
Dot Matrix	128 × 64 Dots	—
Module dimension	35.50 × 32.00 × 2.66	mm
Active Area	29.42 × 14.20	mm
Pixel Size	0.205 × 0.197	mm
Pixel Pitch	0.230 × 0.222	mm
Display Mode	Passive Matrix	
Display Color	Monochrome	
Drive Duty	1/64 Duty	
Controller IC	SH1106	
Interface	I2C	
Size	1.28 inch	

# Contour Drawing & Block Diagram



PIN	SYMBOL
1	VCC
2	GND
3	SCL
4	SDA

Scale 1/1

Scale 20/1

The non-specified tolerance of dimension is  $\pm 0.3$  mm .

## Interface Pin Function

No.	Symbol	Function
1	VCC	Power supply input: 2.9 – 5.2V
2	GND	Ground
3	SCL	When the I2C interface is selected, then D0 serves as the serial clock input pad (SCL) and D1 serves as the serial data input pad (SDAI). At this time, D2 to D7 are set to high impedance.
4	SDA	

## Absolute Maximum Ratings

Parameter	Symbol	Min	Max	Unit
Supply Voltage for Logic	VCC	1.65	5.5	V
Operating Temperature	TOP	-40	+80	°C
Storage Temperature	TSTG	-40	+85	°C

## Electrical Characteristics

### DC Electrical Characteristics

Item	Symbol	Condition	Min	Typ	Max	Unit
Supply Voltage for Logic	VCC	—	2.9	3.3	5.2	V
Input High Volt.	VIH	—	0.8xVCC	—	VCC	V
Input Low Volt.	VIL	—	0	—	0.2xVCC	V
Output High Volt.	VOH	—	0.9xVCC	—	VCC	V
Output Low Volt.	VOL	—	0	—	0.1xVCC	V
50% Check Board operating Current	ICC	VCC =3.3V	-	25	37.5	mA